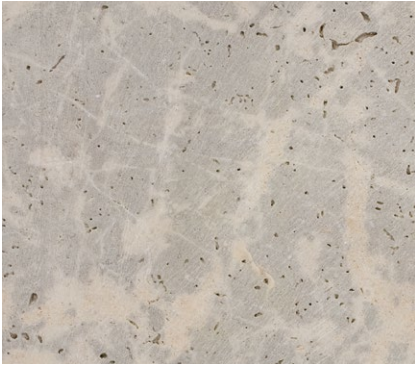


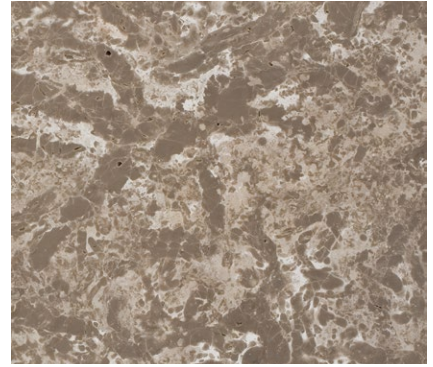
CEDAR RIDGE | FINISHES



Sawn Finish



Honed Finish



Polished Finish



Antique Brush Finish



Bushhammer Finish

ASTM SPECIFICATIONS

ASTM C 97

SPECIFIC GRAVITY: 2.62

ABSORPTION: 2.22%

ASTM C 170

COMPRESSIVE STRENGTH:

Perpendicular

Area 4.512

PS 8,390

Parallel

Area 4.424

PS 11,556

ASTM C 880

FLEXURAL STRENGTH:

Perpendicular: 1,053 psi

Parallel: 7.26 Mpa
